

The New
PROFILE
HOUSE

and

Cottages

WHITE MOUNTAINS
NEW HAMPSHIRE





The New
PROFILE
HOUSE

and

Cottages

WHITE MOUNTAINS
NEW HAMPSHIRE





 *The* NEW PROFILE HOUSE 

On the  *Ideal Tour*



THE POOL

 WHITE MOUNTAINS N.H. 

On the  *Ideal Tour*



FRANCONIA NOTCH



TENNIS COURTS



The NEW PROFILE HOUSE



On the  Ideal Tour



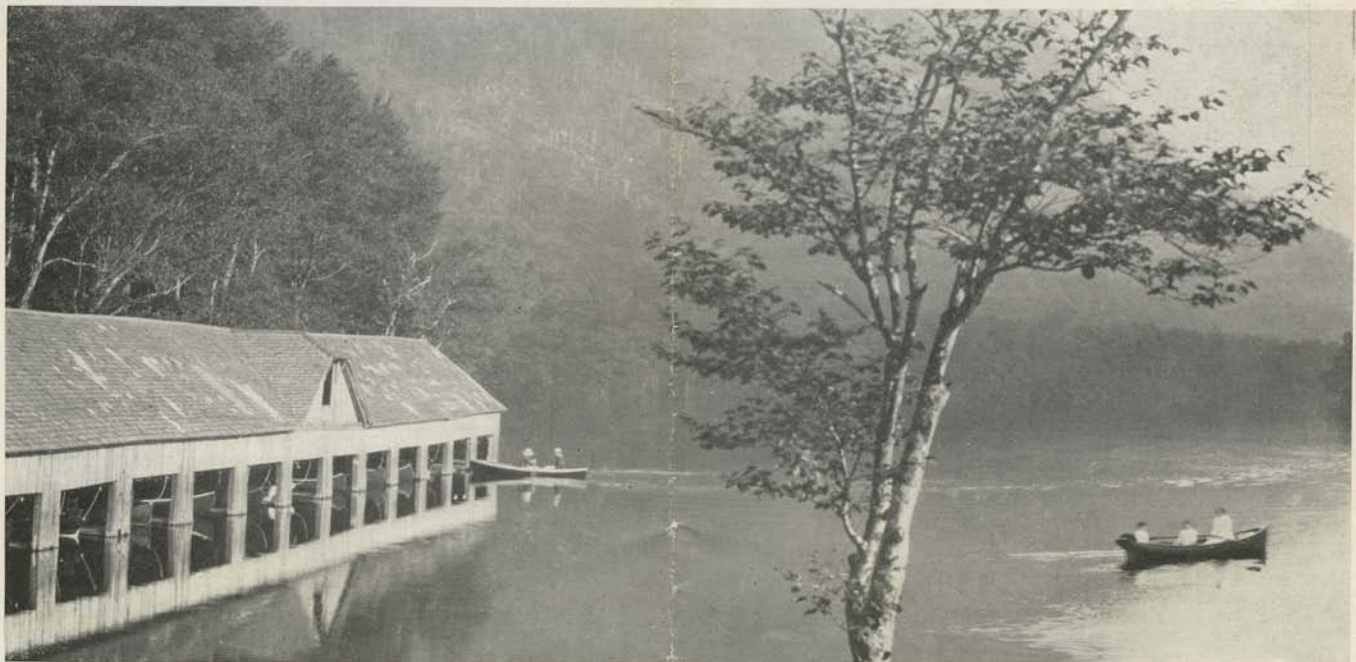
WHITE MOUNTAINS N.H.



On the  Ideal Tour



GOLF CLUB HOUSE AND PUTTING GREEN



BOAT HOUSE ON PROFILE LAKE



The NEW PROFILE HOUSE



On the



Ideal Tour



TRAIL THROUGH WOODS

Within the Company's Preserve, which extends 9 miles through the Franconia Notch, there are many shady woodland paths and well kept roads, which invite one to exhilarating walks and pleasant drives.

ELEVATION ABOVE SEA LEVEL

LAKES	Feet	HOTEL	Feet
Lonesome	2800	PROFILE HOUSE	1974
Profile	1935	Crawford House	1900
Echo	1933	Sugar Hill	1650
Saco	1875	Bretton Woods	1630
Connecticut	1616	Fabyans	1571
Rangeley	1511	Maplewood	1498
Umbagog	1259	Bethlehem	1451
Willoughby	1161	FLUME HOUSE	1450
Moosehead	1023	Jefferson	1445
Memphremagog	700	Twin Mt. House	1410
Squam	510	North Woodstock	809
Winnepesaukee	502	Jackson	759
Ossipee	408	North Conway	525



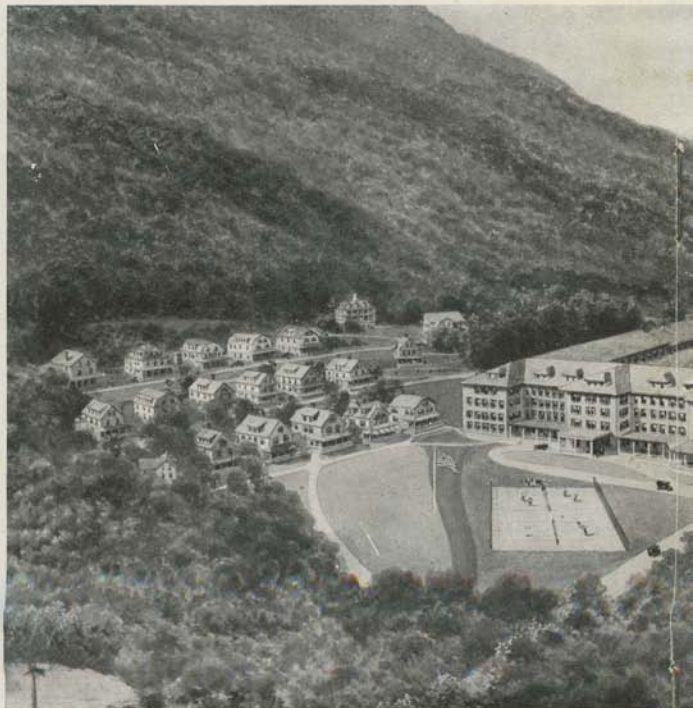
WHITE MOUNTAINS N.H.



On the



Ideal Tour



AEROPLANE VIEW OF THE NEW PROFILE HOUSE

THE "NEW PROFILE HOUSE" is situated in the famous Franconia Notch of the White Mountains, where it is watched over by the Great Stone Face, and is surrounded by the most picturesque scenery in all New England.

It stands in a magnificent preserve of 6,000 acres, nearly 2,000 feet above the level of the sea. On either side lies a lovely lake; behind it are towering cliffs and wooded heights; and in every direction woodland paths and rocky trails offer ever-changing glimpses of the wonderful White Mountain scenery.

Its admirable location, in the heart of the White Mountains, makes it a convenient center for excursions to other points of interest in the mountains.

With its twenty cottages, the "NEW PROFILE HOUSE" can accommodate 500 guests, and these represent the highest class of patronage, at-



The NEW PROFILE HOUSE

On the  Ideal Tour



PROFILE HOUSE AND COTTAGES

tracted to the house by its unvarying high standard of excellence for over fifty years.

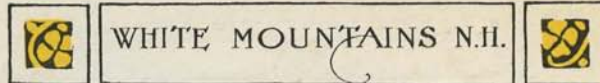
Every accommodation for the comfort and convenience of its guests is offered, including special facilities for the care of motorcars and chauffeurs.

For those touring in automobiles the "NEW PROFILE HOUSE" is most attractive, being on the Ideal Tour and the New Hampshire State Highway.

The train service also is excellent, with through parlor and sleeping cars from New York and all Eastern cities.

A Western Union Telegraph Office is maintained in the hotel, with a direct wire to Boston, and quick New York connection.

The correct address for postoffice, telegraph, express and railroad is PROFILE HOUSE, New Hampshire.



WHITE MOUNTAINS N.H.

On the  Ideal Tour



ON THE LAKE

There are two lakes within a few minutes' walk of the "NEW PROFILE HOUSE"—Echo Lake to the North, and Profile Lake to the South—with every facility for canoeing, boating and fishing.

MOTORING DISTANCES		MOTORING DISTANCES	
PROFILE to	Miles	PROFILE to	Miles
Franconia	5	North Conway	48
FLUME HOUSE	5	Hanover	67
No. Woodstock	10	Montpelier	70
Sugar Hill	10	Sunapee Lake	72
Bethlehem	11	Dixville Notch	80
Bretton Woods	18	Concord, N. H.	80
Littleton	11	Waterbury, Vt.	82
Twin Mountain	13	Woodstock, Vt.	86
Whitefield	20	Poland Spring	100
White Mt. Notch	21	Burlington, Vt.	110
Jefferson	26	Portland	113
Plymouth	30	Portsmouth	133
Lancaster	32	Portsmouth via Weirs	133
St. Johnsbury	32	Boston	
Jackson	44		
Weirs	45		

THE VENDOME
160 Miles



The NEW PROFILE HOUSE



On the



Ideal Tour



WHITE MOUNTAINS N.H.



On the



Ideal Tour



THE DINING ROOM

The Dining Room, one of the largest in New England, is remarkable for its architectural beauty. The kitchen has been entirely remodelled and newly equipped, during the past year, with every device to insure a perfect cuisine and excellent service.



THE DAIRY

¶ The Profile Dairy is entirely modern in its equipment, and the certified milk produced here is especially appreciated by families with children.

¶ The Profile Farm and greenhouses furnish a daily supply of fresh vegetables, fruit, and flowers.

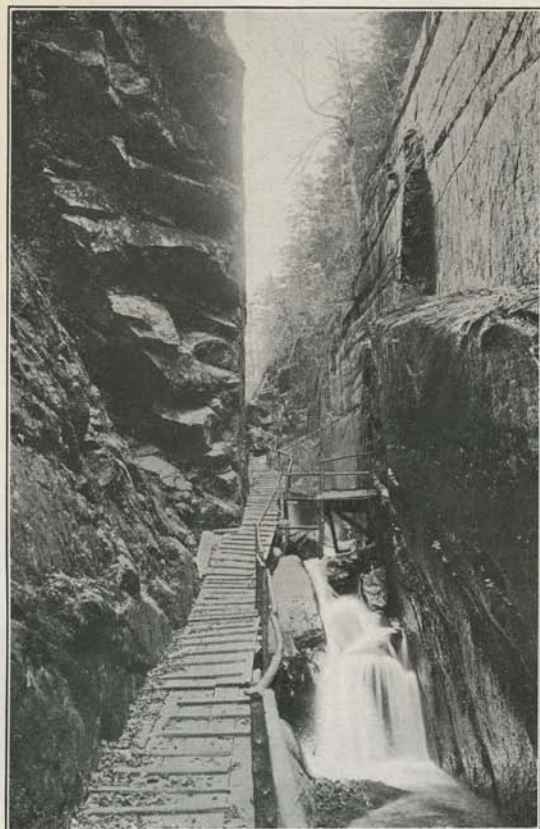


THE HERD



OFFICE

THE FLUME, one of those marvellous freaks of nature, which in grandeur and attractiveness is only surpassed by the Great Stone Face.



THE FLUME

The "FLUME HOUSE," a restful summer Hotel, is 5 miles from the "NEW PROFILE HOUSE," and under the same ownership. It is located at the southern extremity of the Franconia Notch, and but a short distance from the famous Flume. Touring motorists will find here a comfortable Inn and a well-kept garage.

The House is operated on both the American and European plans, and is open from June 1st to October 15th.

For information address Manager, "FLUME HOUSE," Franconia Notch, New Hampshire, or the New York office at 1180 Broadway.



ENTRANCE PUBLIC GARDENS



HOTEL VENDOME
*Commonwealth Ave at Dartmouth St,
Boston*

THE Vendome provides, as any first-class hotel should, every facility for the convenience and enjoyment of its guests.

The rooms are large, high-studded and comfortably furnished. Large windows, reaching from the ceiling to the floor in nearly every case, afford an abundance of light and air. There is also plenty of closet room.

The popularity of the Vendome is due to its fortunate location, cool and quiet surroundings, fine clientele and unexcelled cuisine. Particularly suited to ladies traveling alone.

The Vendome is much in favor with touring automobile parties who appreciate a cool, quiet and refreshing night's rest after the tiring journey of the day.

ON "IDEAL TOUR"

EXCELLENT GARAGES NEAR BY

C. H. GREENLEAF & CO., Proprietors
Everett B. Rich, Managing Partner





The NEW PROFILE HOUSE



On the



Ideal Tour

THE "NEW PROFILE HOUSE" with its twenty cottages, each connected with the Hotel by a covered passageway, is located in Franconia Notch, N. H., "the heart of the White Mountains."

The Company's preserve of 6000 acres extends nine miles through the Notch, with mountains, trails, and woodland paths radiating in all directions from the Hotel.

An excellent garage, thoroughly modern in equipment, with a capacity of over 75 cars, is maintained by the Hotel.

Season from June to October

Early Reservations Should Be Made

PROFILE AND FLUME HOTELS CO.

C. H. Greenleaf, *President*
E. B. Rich, *Asst. to President*

A. E. DICK,
Manager



WHITE MOUNTAINS N.H.



On the



Ideal Tour

Directly in front of the Hotel are three fine tennis courts for the exclusive use of the guests and cottagers.

The Profile Golf Course, with its natural hazards and well-kept greens, is considered one of the best in the Mountains, and the privileges of the club house and golf course are extended our guests and cottagers at nominal rates.

Through Pullman service from New York and Boston, with connections with all railroads from the South and West.

For rates and detailed information concerning rooms and cottages:

Address until June 20th
NEW YORK OFFICE

1180 Broadway, Telephone 4748 Madison Square

BOSTON OFFICE

HOTEL VENDOME, Commonwealth Avenue



PROFILE LAKE